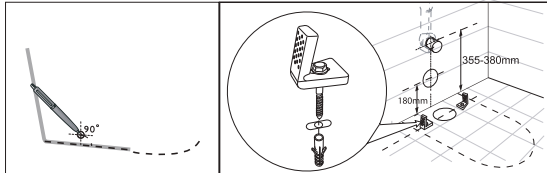


# MERCIO

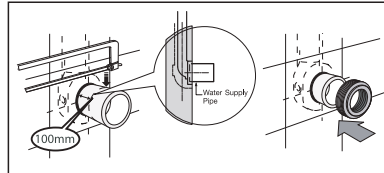
Installation Guide

## WALL-FACED PAN

### Fixing bracket & Water inlet



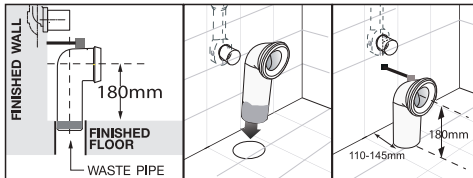
Position pan against wall and mark off pan fixing holes on floor.



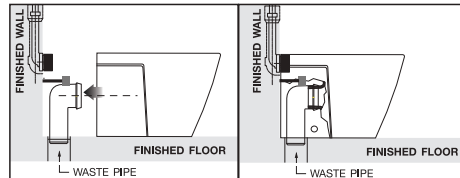
Water inlet pipes should be roughed in at 380mm. Cut inlet pipe so that 100mm protrudes from finished wall and attach seal.

### S-Trap Installation

**NOTE:** This is a set out of 110-145mm

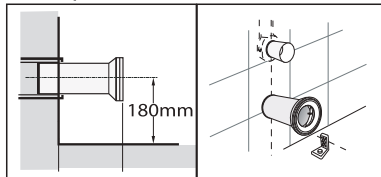


Insert waste pipe into floor at a setout of 110-145mm and 180mm above finished floor and fix bracket into position as per diagram above.

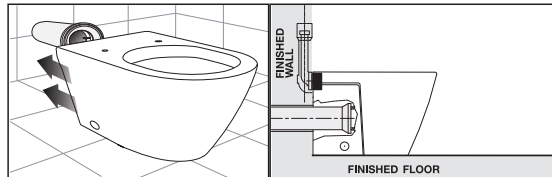


Push pan into position. Ensure that you make a firm connection with inlet and outlet pipes and avoid disturbing the floor fixing brackets. Flush test for leaks.

### P-Trap Installation

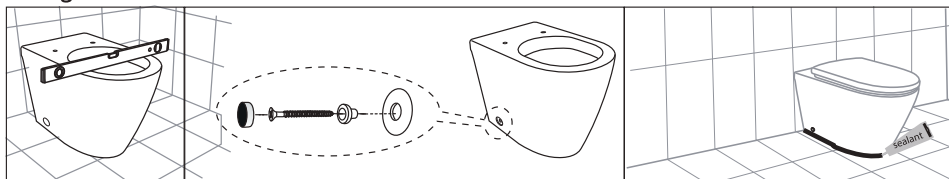


100mm DWV with pan collar (not supplied).



Push pan back into position. Ensure that you make a firm connection with inlet and outlet pipes and avoid disturbing the floor fixing brackets. Flush test for leaks.

### Fixing Pan to Floor



Ensure that pan is level. Fix pan to floor using fixing screws and flexible sealant. Install soft closing seat.

Dear Plumbers, please ensure a copy of the installation instructions is left with the end user for future reference



Unicasa Pty Ltd  
81, Milperra Road, Revesby NSW 2212  
PH: 02 9772 0388  
E-mail: [info@mercio.com.au](mailto:info@mercio.com.au)  
[www.mercio.com.au](http://www.mercio.com.au)



Unique Design



Rimless



Soft-closing seat



Anti-bacterial



Vacuum Test Process



Minimum Water Consumption



Easy Installation



Ergonomic Sitting Posture