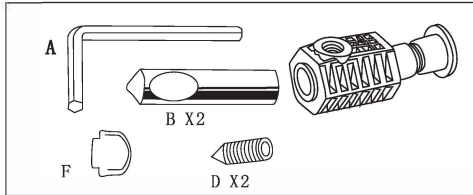


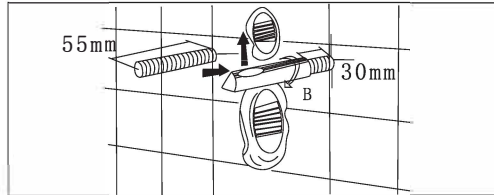
MERCIO

Installation Guide

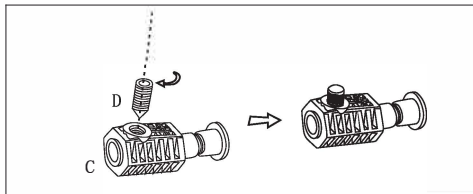
Wall-hung Toilet
ZAWH/ENWH



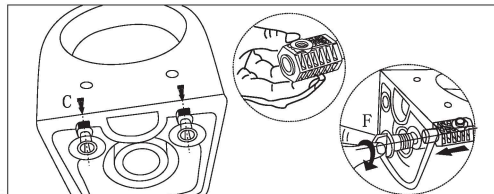
1. Five spare part: A, B, C, D, E, F (as shown).



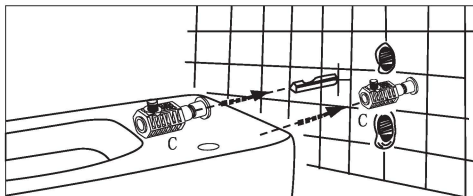
2. As shown, installing B into the screw rod & keeping screw notch vertically upward.



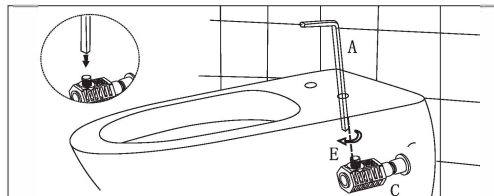
3. Inserting C into the mounting hole & keeping the threaded hole vertically upward.



4. Inserting B into C & fixing D slightly above C.



5. Installing D into the screw hole of C & Fixing it on the mounting hole by using A.



6. Installation completed, please be seated to check the stability.

Cleaning and maintenance

1. The products should not be cleaned with any acidic or abrasive cleansers.
2. The products' surfaces should be cleaned with a soft cloth and a solution of a gentle cleanser.



Unicasa Pty Ltd
81, Milperra Road, Revesby NSW 2212
PH: 02 9772 0388
E-mail: info@mercio.com.au
www.mercio.com.au



Unique Design



Rinless



Soft-closing seat



Anti-bacterial



Vacuum Test Process



Minimum Water Consumption



Easy Installation



Ergonomic Sitting Posture